

Thank you for choosing Sunnydaze Decor. We stand behind our brand and the quality of the items we sell. Replacement parts or products will be sent at our discretion, within the one-year warranty period. Proof of purchase, with the date of purchase as well as photos of the defective merchandise, must be provided. If you have any questions, comments or concerns please feel free to contact us by phone at: **888-881-4668**. You may also contact us by email: customerservice@serenityhealth.com, or via our webpage at: www.serenityhealth.com/contact-us/



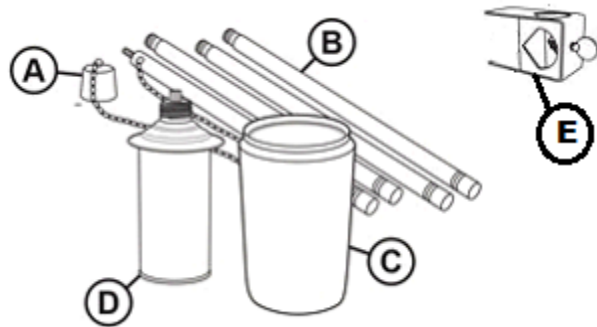
3-in-1 Torch

Torch Warnings & Instructions

Save these Warnings & Instructions for future reference.

PRODUCT BOX CONTENTS

- A.) 2 Snuffers**
- B.) 8 Pole Sections**
- C.) 2 Decorative Vessels**
(Shapes may vary)
- D.) 2 Fuel Canisters (Includes wick,
flame guard and canister)**
- E.) 2 Mounting Clamps**



DANGER

Torch Fuel is harmful or fatal if swallowed. Contains petroleum hydrocarbons. Combustible. Read Warning on torch fuel bottle carefully.

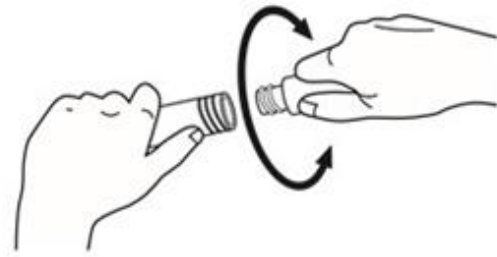
WARNING

- Read and understand these instructions.
- Do not tip torch as fuel can spill before use and can cause fire or serious injury.
- For outdoor use only.
- Failure to follow warnings and instruction may result in serious injury or destruction of property.
- Keep out of reach of children or pets.
- Do not leave a burning torch unattended.
- Do not use gasoline or other flammable liquids.
- Do not move while burning.
- To prevent burn injuries, snuff flame, and allow to cool down before handling.
- Refill torch before use, and only refill when torch is cold, wait at least 30 minutes before refilling or cleaning.
- Keep clothing, hair, and body parts away from flame- may cause serious burns.
- DO NOT place torch under covered shelter or umbrella, or near other combustibles, such as but not limited to wood structures, clothing, dry vegetation.
- Use in well-ventilated area.
- Do not use torch fuel with any other product vessel.
- Hot while in use.



Assembly and Torch Installation:

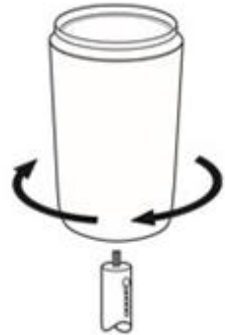
1. Assemble the Pole Sections together,
2. Assemble the Decorative Vessel to the Pole Assembly,
3. Do not place Torch under covered shelter, near pedestrian traffic or combustibles such as wood structures, fuel, clothing or dry vegetation.
4. Insert Torch Pole into the ground a minimum of 6 inches until secured.



Note: The Pole Section with the Snuffer/Chain is the Top Pole Section.

Torch Installation Options:

Torch stability depends on many conditions. Sunnydaze Brand products offer a variety of **installation options** for multiple backyard environments. For best results, select one of these recommended torch installation options.



1. Into Ground



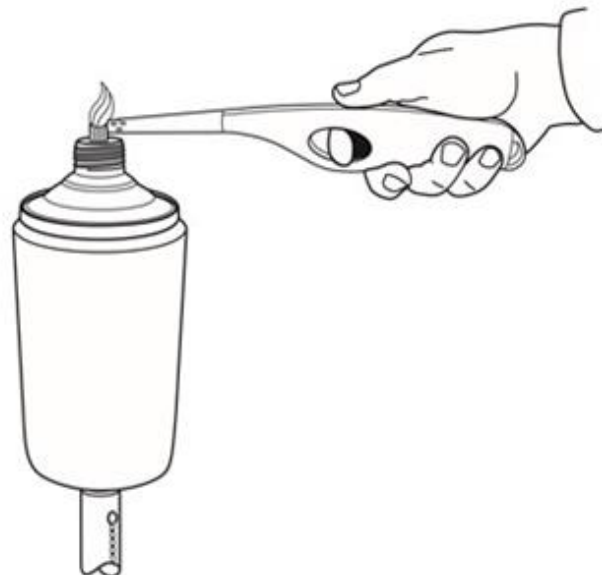
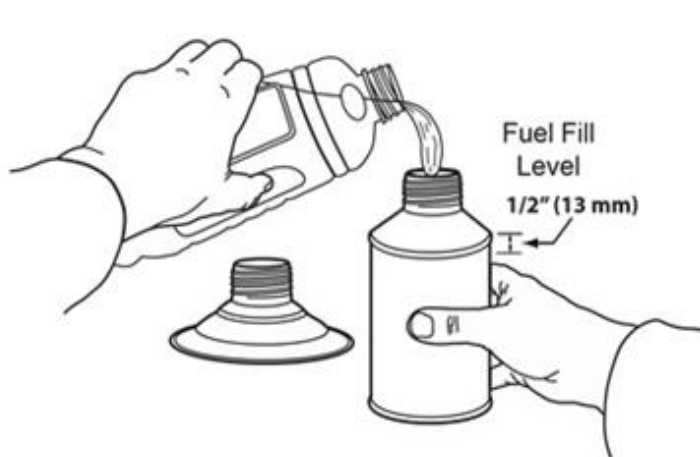
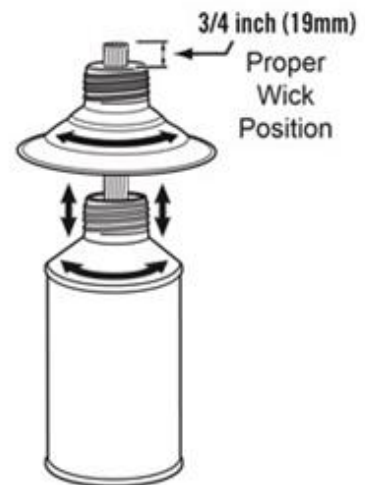
2. Torch Stand



3. Torch Stake

Filling and Lighting:

1. Remove the Fuel Canister from the Decorative Vessel.
2. Unscrew metal Flame Guard from the Fuel Canister,
3. Fill the Decorative Fuel Canister to 1/2 inch (13 mm) below seam with Torch Fuel – Do Not Overfill.
4. Wipe away any spilled fuel *before* lighting.
5. Reattach the metal Flame Guard to the Fuel Canister
DO NOT OVERTIGHTEN.
6. Place Fuel Canister into the Decorative Vessel.
7. Allow Wick to become saturated with fuel before lighting.
8. Use a long Lighter or long fireplace match to light the Torch.



Extinguishing:

1. Using the metal Snuffer that is provided, carefully place completely over Wick until flame is extinguished – DO NOT BLOW OUT.

Note: Leave the Snuffer on the Torch to prevent water contamination.

Note: If the Fuel becomes contaminated with water, the Wick and Fuel must be replaced and properly disposed of in accordance with local laws and regulations.

Refilling:

1. Carefully place Snuffer over Flame Guard to extinguish flame – DO NOT BLOW OUT.
Allow to cool for 30 minutes before handling and refilling.
2. Remove the Fuel Canister from the Decorative Vessel.
3. Unscrew the metal Flame Guard from the Fuel Canister.
4. Fill the Decorative Fuel Canister to 1/2 inch (13 mm) below seam with Torch Fuel – Do Not Overfill.
5. Wipe away any spilled fuel *before* lighting.
6. Reattach metal Flame Guard to Fuel Canister – DO NOT OVERTIGHTEN.

Wick Replacement:

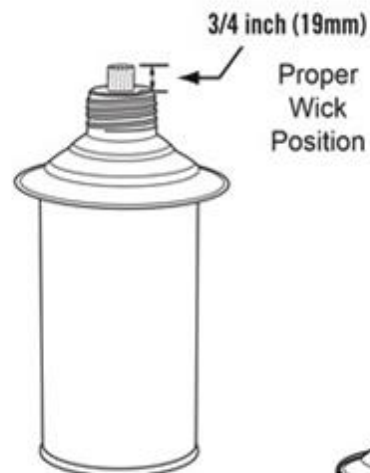
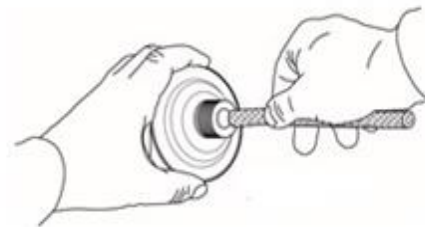
1. Carefully remove the Wick from the Flame Guard Properly dispose of the Wick in accordance with local laws and regulations.
2. Replace the Wick with a new Torch Wick and position the Wick with 3/4 inch exposed.
3. Trim as required.

Storage:

1. Store Fuel in original Fuel Bottle with Cap secured.
2. Dispose of any unwanted Fuel in accordance to local laws and regulations.
2. Store upright in a dry location.
3. For best results, store product away from the weather conditions when not in use.

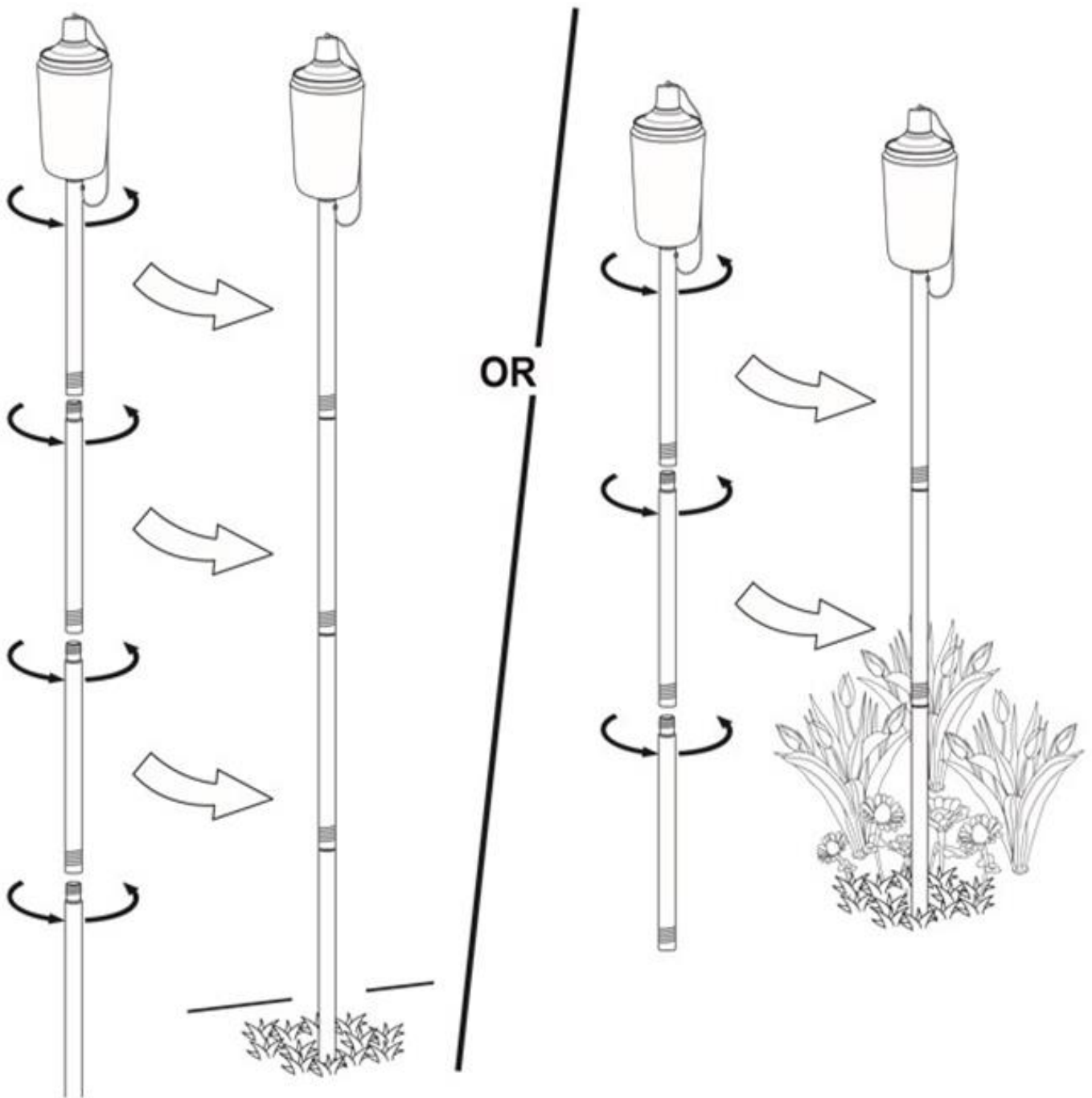
Cleaning:

1. When not in use, use a damp cloth to remove debris from the Decorative Vessel as needed.



Garden Torches:

1. Assemble the pole sections as desired to create the torch style you prefer
2. Insert the torch pole into the ground, a minimum of 6 inches or until secured.
- 3 Do not place torch under covered shelter or umbrella, near pedestrian traffic, or combustables such as but not limited to wood, fuel, clothing, etc.



Deck Mounted Torch:

1. Assemble pole sections.
2. Attach the Deck Rail Mounting Bracket at the desired location.
3. Position the Torch in the Deck Rail Mounting Bracket (included in box) as desired.
4. Do not place Torch under covered shelter or umbrella, near pedestrian traffic or combustibles such as wood structures, fuel, clothing or dry vegetation.

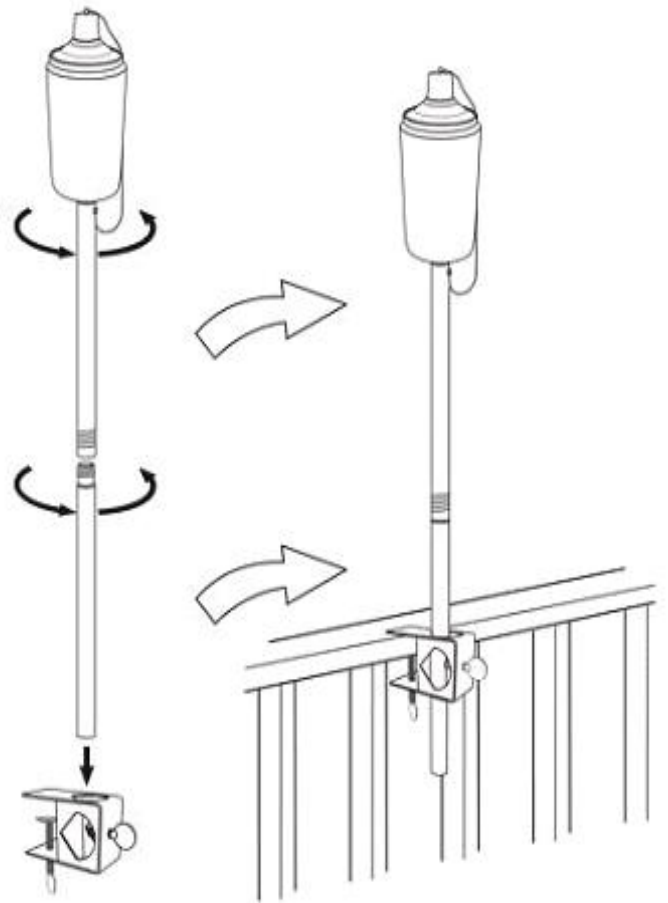


Table Top Torch:

1. Use the Decorative Vessel with the Fuel Canister for a Table Top Torch.
2. Do not place Torch under covered shelter or umbrella, near pedestrian traffic or combustibles such as wood structures, fuel, clothing or dry vegetation.

