

TRANQUIL RAIN SHOWER OUTDOOR METAL WATER FOUNTAIN WITH LED LIGHTS

SSS-145

Read assembly instructions carefully and follow the care instructions. Save these instructions for future reference.

Select a smooth, level surface to place the fountain.

Assemble components of this fountain on a soft, clean surface to avoid scratching or damaging the finish.

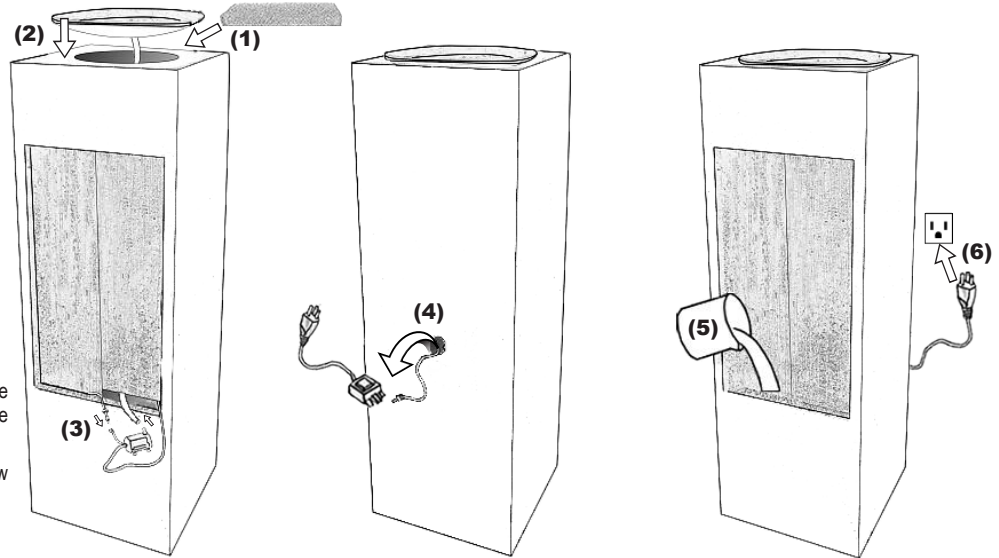


Ensure all parts are accounted for before disposing of packaging.

PARTS	QTY.
Fountain	1
Bowl	1
Polyurethane Foam Filter	1
LED Light Strip	1
Electric Submersible Pump	1
Adapter Cord	1

NOTES: The water tubing is built into the top bowl. Take care when handling the water tube; detaching the tube from the fountain will damage the fountain and void the product warranty.

The polyurethane foam filter is required to help control water flow and helps prevent the drainage holes from clogging.



ASSEMBLY

- Place the polyurethane foam filter in the top of the fountain, over the drainage holes.
- Run the water tube that is attached to the bowl down through the inside of the fountain and place the bowl onto the fountain.
- Connect the water tube and light cable to the pump and place the pump in the bottom of the fountain. Please note, the LED light strip secures to the bottom of the fountain via metal tabs inside the fountain. If tabs are bent upwards, they may not keep the light in place.
- Run the long pump cable up through the hole in the back of the fountain and connect it to the adapter cord.
- Fill the fountain with enough water to keep the pump fully submerged during operation; approximately 5 gallons.
- Plug the power cord into a properly grounded GFCI outlet.

Note: When first used, there may be air in the pump. It may take several minutes for the air to escape and water begins to flow.

! IMPORTANT INFORMATION !

USE & CARE

- For outdoor use only. Some splashing is normal; adjust the flow rate on the pump if the water rate is too high.
- Check the water level frequently to ensure the pump remains fully submerged; never allow the pump to run dry as it will burn out the motor.
- Only use water in this fountain. Distilled water will help prevent mineral buildup but is not required, avoid heavily chlorinated tap water as it may damage the fountain or pump.
- Periodically change the water to keep the water, fountain and pump clean. Remove scale and buildup regularly.
DO NOT use harmful additives such as bleach, chlorine, etc.
DO NOT use a pressure washer or abrasive materials to wash the fountain.
- Always shut off the power supply before cleaning and maintaining the fountain and the recirculating pump.
- Take care when handling the pump; only pick it up by the body of the pump, never by the power cord.
- During freezing weather, drain the fountain, disconnect the pump and store indoors; allowing ice to form may crack the fountain.

TROUBLESHOOTING

- Ensure that the pump is fully submerged and add water to the basin if necessary.
- Check the pump and tubing for obstructions.
- Check the flow control on the body of the pump as it may need to be adjusted to achieve the desired flow rate.
- If the light is not working, ensure the cables are fully connected and the seal is adequately tightened (do not over-tighten).
- If water is not flowing within several moments of the fountain being plugged in, unplug the power supply for a few moments and plug it back in; the pump may have trapped air which can prevent water from circulating properly.
- Check to make sure the power outlet is working; if in doubt about electrical connections, consult a certified electrician.

Any modification or failure to follow the recommended care will void the product warranty.