



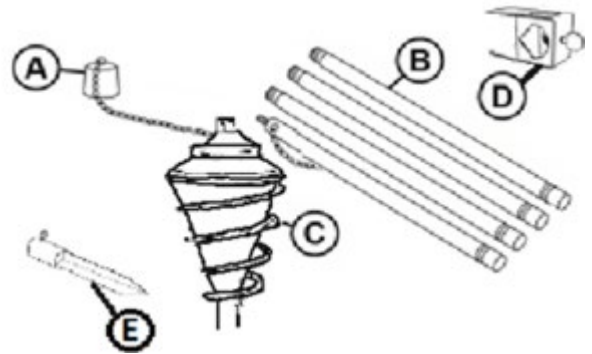
Thank you for choosing Sunnydaze Decor. We stand behind our brand and the quality of the items we sell. Replacement parts or products will be sent at our discretion, within the one-year warranty period. Proof of purchase, with the date of purchase as well as photos of the defective merchandise, must be provided. If you have any questions, comments or concerns please feel free to contact us by phone at: **888-881-4668**. You may also contact us by email: [customerservice@serenityhealth.com](mailto:customerservice@serenityhealth.com), or via our webpage at: [www.serenityhealth.com/contact-us/](http://www.serenityhealth.com/contact-us/)

## 2-in-1 GLASS TORCH

**SAVE THESE WARNINGS & INSTRUCTIONS FOR FUTURE REFERENCE**

### Product Box Contents

- A. 2 Snuffers
- B. 8 Pole Sections
- C. 2 Glass Torch Vessels
- D. 2 Mounting Clamps
- E. 2 Torch Stakes



**⚠ DANGER**

Torch Fuel is harmful or fatal if swallowed. Contains petroleum hydrocarbons. Combustible. Read Warning on torch fuel bottle carefully.

**⚠ WARNING**

- Read and understand these instructions.
- Do not tip torch as fuel can spill before use and can cause fire or serious injury.
- For outdoor use only.
- Failure to follow warnings and instruction may result in serious injury or destruction of property.
- Keep out of reach of children or pets.
- Do not leave a burning torch unattended.
- Do not use gasoline or other flammable liquids.
- Do not move while burning.
- To prevent burn injuries, snuff flame, and allow to cool down before handling.
- Refill torch before use, and only refill when torch is cold, wait at least 30 minutes before refilling or cleaning.
- Keep clothing, hair, and body parts away from flame - may cause serious burns.
- DO NOT place torch under covered shelter or umbrella, or near other combustibles, such as but not limited to wood structures, clothing, dry vegetation.
- Use in well-ventilated area.
- Do not use torch fuel with any other product vessel.
- Hot while in use.



## Torch Assembly

1. Assemble the pole sections to desired height (Figure 1).  
**\*Note:** The pole section with the snuffer/chain is the top pole section.
2. Attach the glass vessel to the pole assembly (Figure 2).
3. Select installation method (below) and install as noted.

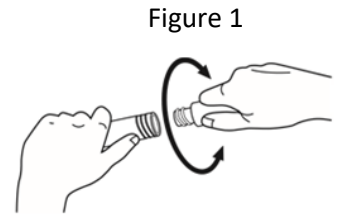


Figure 1

## Torch Installation Options

Torch stability depends on many conditions, always check your torches to ensure they are in a sturdy, stable location and properly installed before filling and lighting. Sunnydaze Decor products offer a **variety of installation options** for multiple backyard environments. For best results, select one of these recommended torch installation options.

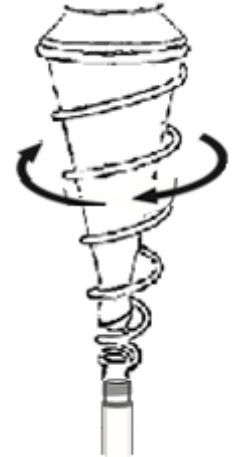
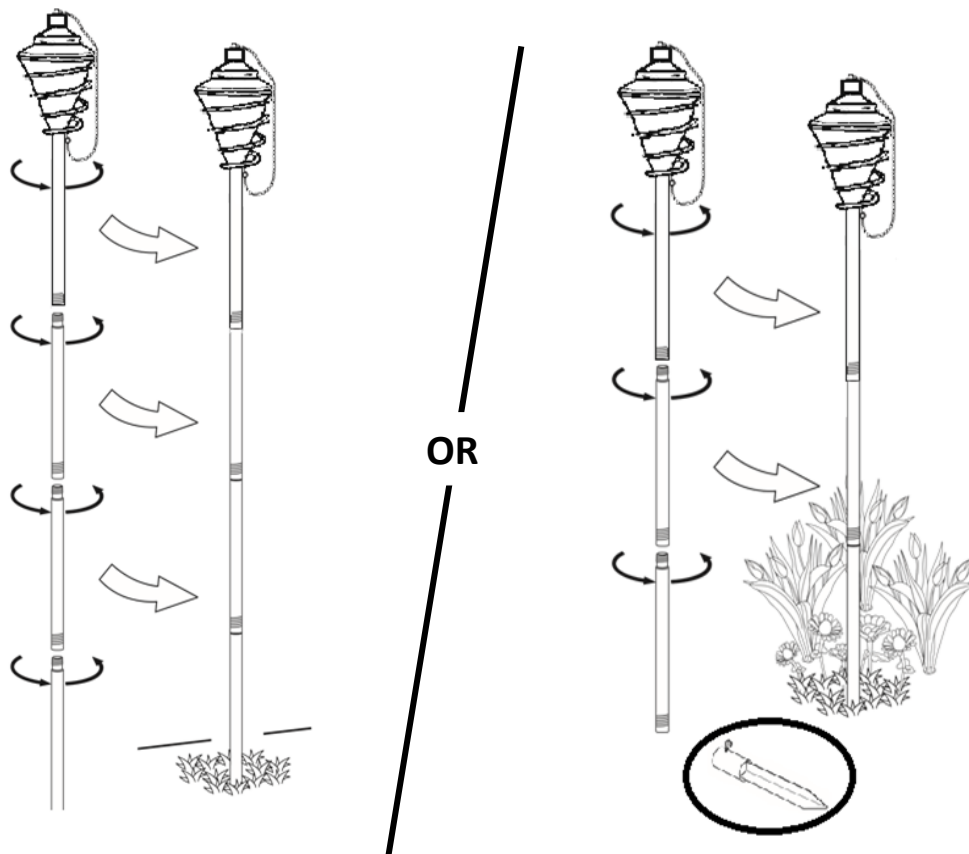


Figure 2



## In-Ground/Torch Stake Installation

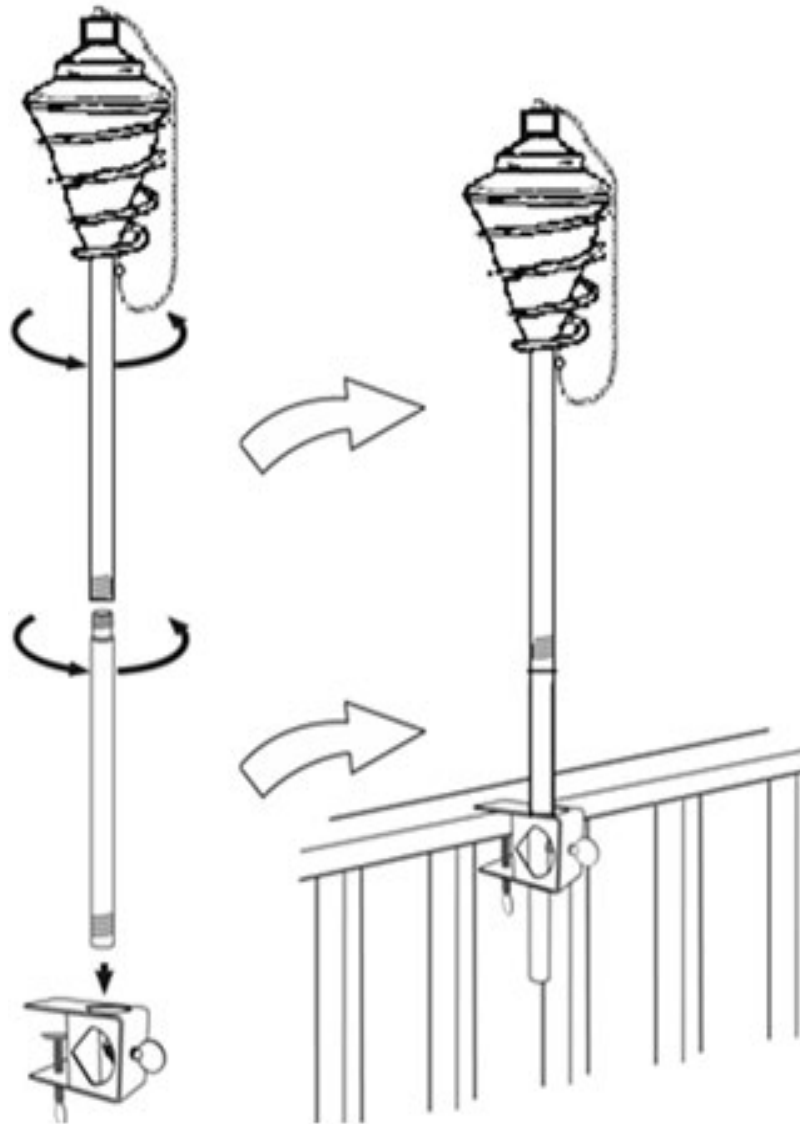
1. Assemble the pole sections as desired to create the torch height you prefer.
2. Insert the torch pole directly into the ground or with the provided torch stakes – approximately 6 inches or until the torch is sturdy and will not tip over once filled.  
**\*Note:** Do not place torch under covered shelter or umbrella, near pedestrian traffic or combustibles such as, but not limited to, wood structures, fuel, clothing, etc.



## Deck-Mount Installation

1. Assemble pole sections.
2. Attach the deck rail mounting bracket to the desired location.
3. Position the torch in the deck rail mounting bracket.

**\*Note:** Do not place torch under covered shelter or umbrella, near pedestrian traffic or combustibles such as, but not limited to, wood structures, fuel, clothing, etc.



## Filling and Lighting

1. Unscrew metal flame guard from the glass vessel (Figure 3).
2. Fill the glass vessel to 1/2 inch (13 mm) below seam with torch fuel.  
- **DO NOT OVERFILL**
3. Wipe away any spilled fuel *before* lighting.
4. Reattach the metal flame guard to the fuel canister (Figure 4).  
- **DO NOT OVERTIGHTEN**
5. Allow wick to become saturated with fuel before lighting.
6. Use a long lighted or long fireplace match to light the torch wick (Figure 5).

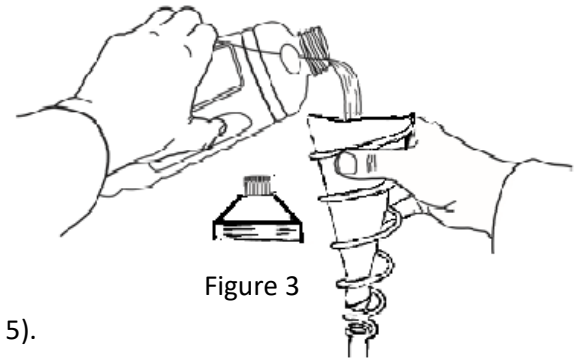


Figure 3

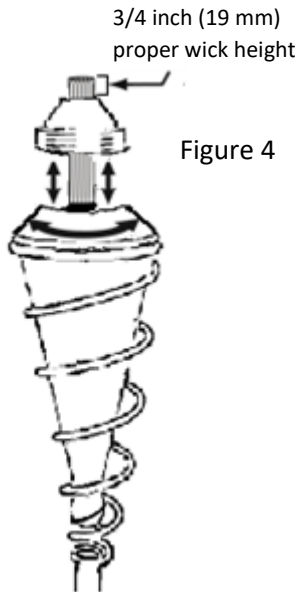


Figure 4

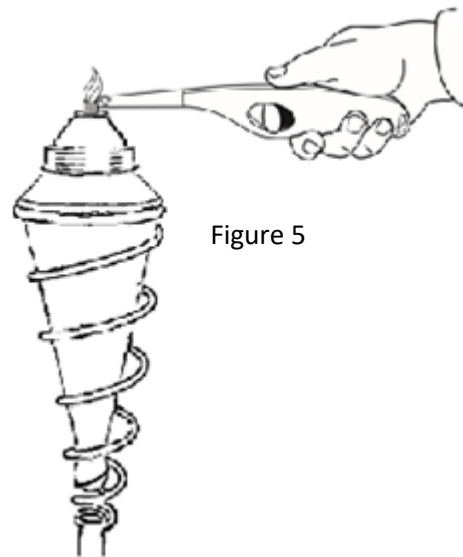


Figure 5

## Extinguishing

1. Using the metal snuffer provided, carefully place the snuffer completely over the lit wick until the flame is extinguished (Figure 6). – **DO NOT BLOW OUT**

**\*\*Note:** When not in use, leave the snuffer on the torch to prevent water contamination. If the fuel becomes contaminated with water, the wick and fuel must be replaced and properly disposed of in accordance with local laws and regulations.

## Refilling

1. Carefully place snuffer over flame guard to extinguish flame.  
– **DO NOT BLOW OUT**  
– **Allow to cool for 30 minutes before handling and refilling**
2. Unscrew the metal flame guard from the glass vessel.
3. Fill the glass vessel to 1/2 inch (13 m) below seam with torch fuel.  
– **DO NOT OVERFILL**
4. Wipe away any spilled fuel before lighting.
5. Reattach the metal flame guard to the fuel canister.  
– **DO NOT OVERTIGHTEN**



Figure 6

## Wick Replacement

1. Carefully remove the wick from the flame guard and properly dispose of the wick in accordance with local laws and regulations.
2. Insert the new torch wick (Figure 7) and position the wick with 3/4 inch of the wick exposed.
3. Trim as needed.

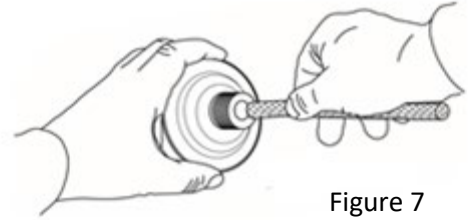


Figure 7

## Storage

1. Store fuel in original fuel bottle with cap secured.
2. Dispose of any unwanted fuel in accordance to local laws and regulations.
3. Disassemble pole sections and/or other installation components prior to storing.
4. Store torches in an upright position in a dry location (Figure 8).
5. For best results, store product away from the weather conditions when not in use.



Figure 8

## Cleaning

1. When not in use, use a damp cloth to remove debris from the glass vessel as needed.

