



Thank you for choosing Sunnydaze Decor. If you have any questions, comments or concerns please feel free to contact us by phone at: **888-881-4668**, by email: [customerservice@serenityhealth.com](mailto:customerservice@serenityhealth.com), or you could also email us via our contact us page at: [www.serenityhealth.com/contact-us/](http://www.serenityhealth.com/contact-us/).

We stand behind our brand and the quality of the items we sell. We will send new parts, or replace products at our discretion within the one year warranty period. Before we can help, you will need to provide proof of purchase with the date of purchase and photos of the defective merchandise. We will use the photos to determine the cause of defect and for future quality control.

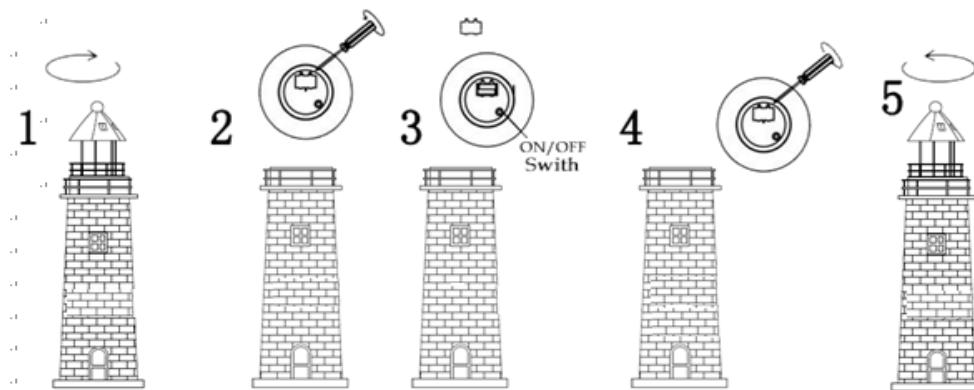
## Solar Lighting Decoration Instruction

Item#:GSI-804

### Warning and Safety Concerns

- \* This is not a toy. Keep out of reach of children
- \* Do not use solvents or abrasive cleaners to clean this product. If cleaning is required, use only a soft damp cloth.
- \* Never try to disassemble or repair this product
- \* Keep electrical cords away from all heat sources. Do not place electrical cords
- \* For long-term storage, wipe lighthouse clean, turn switch to the OFF position and store indoors in a dry location

### ASSEMBLY INSTRUCTIONS



#### ☐☐ TROUBLESHOOTING:

If the Lighthouse does not light, please refer to the following

1. Make sure it has been fully charged under full and direct sunlight for a minimum of 10- 12 hours
2. If fully charged, make sure ON/OFF switch is in the ON position. (Cover the light sensor with your hands and the light should turn on; if not, turn ON/OFF switch to ON again.)
3. If fully charged, and it still will not light, replace battery as described below. (The life of the rechargeable battery is approx. one year. When the light becomes dim or the lighted time diminishes, the battery will need to be replaced. )
4. Please note cloudy or partially cloudy weather may have prevented a full charge. Test again after a full day in direct sunlight.
5. Please note that dirt or obstructions may prevent the solar panel from absorbing direct sunlight. Make sure solar panel is clean and clear of any obstructions.
6. Porch lights or other light sources will prevent this product from turning on/off automatically. Make sure this product is placed in a location away from other nighttime light sources.

#### ☐ TO REPLACE BATTERY:

1. Turn light head clockwise to expose the battery compartment located in the light head base
2. Turn ON/OFF switch to the OFF position and remove the battery compartment cover
3. Find battery compartment on bottom of base and turn cover counterclockwise to open